

 ANT WIRELESS
SYMPOSIUM 2018
OCTOBER 2-4
BANFF, CANADA

ANT & IoT

Do they go together?

About NPE

- Established in 1997 & based in Minneapolis, MN
- We have built our business around helping our customers connect “things” to solve problems and overcome challenges
- We do this through our connectivity products and engineering services

Does ANT fit - How do we answer that question?

What challenges are we facing/what problems are we trying to solve?

What “things” would we need to connect to these solve problems and overcome our business challenges?

What value is derived from connecting “things” for our business?



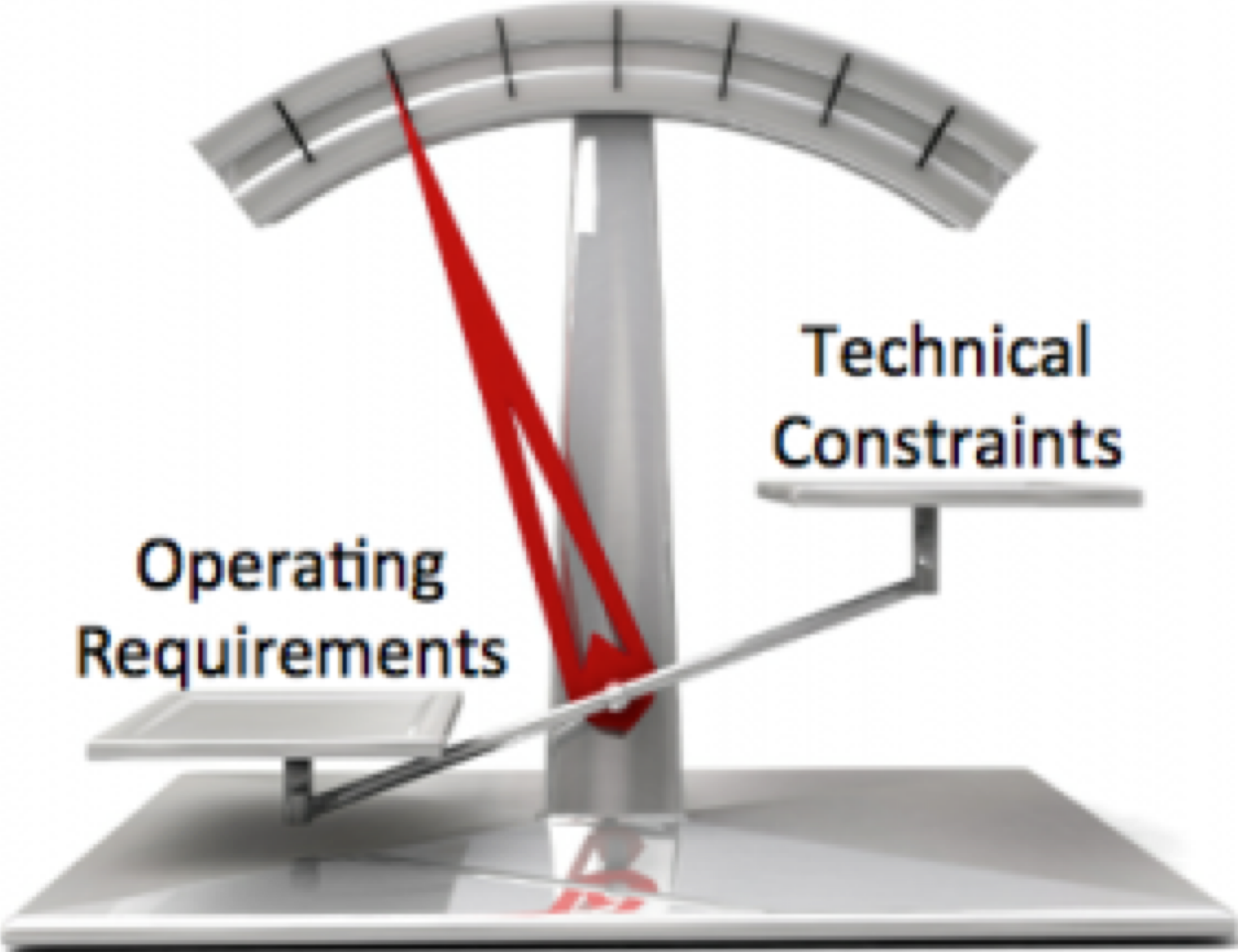
Value Creation

- Efficiency improvements
- Revenue integrity
- Enter new markets
- Grow existing market share
- Lower product costs
- Create new revenue streams

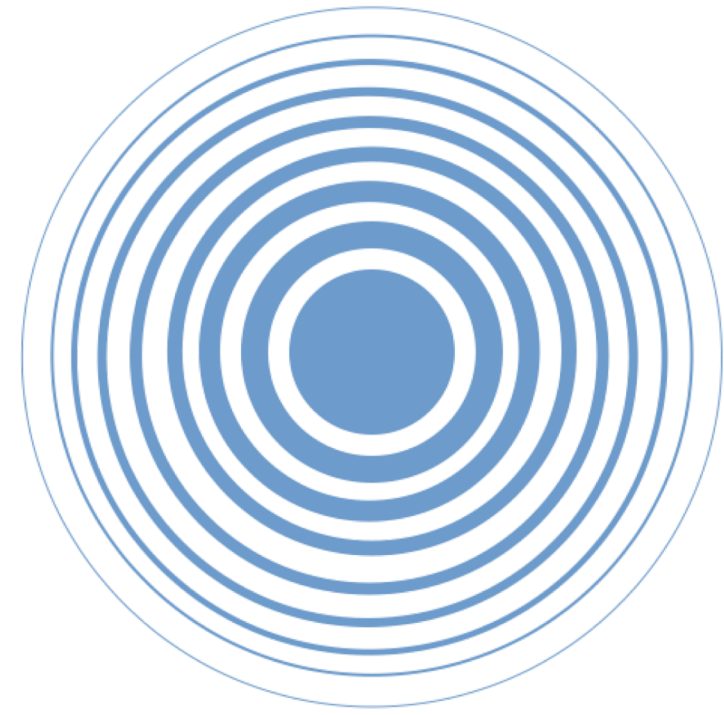


Does ANT fit - What constraints are there in connecting our “things”?

- Power?
- Physical?
- Environmental?
- How much data, how often?
- Where does data need to go?
- Cost?



What are the connectivity constraints?



Range



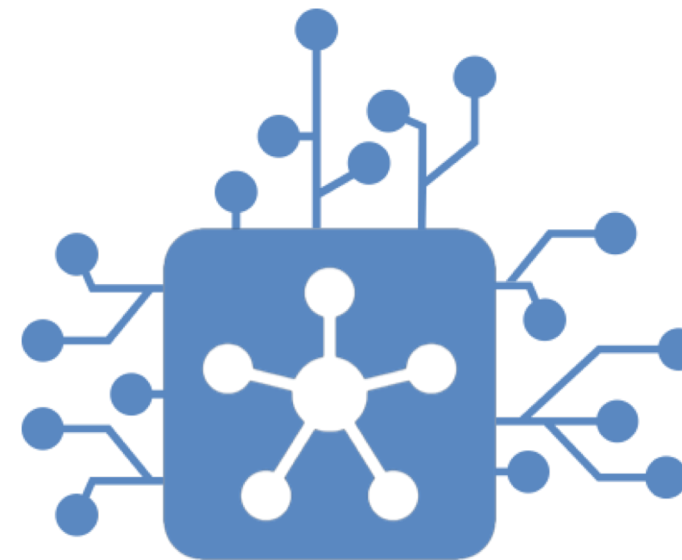
Data/throughput



Latency



Cost

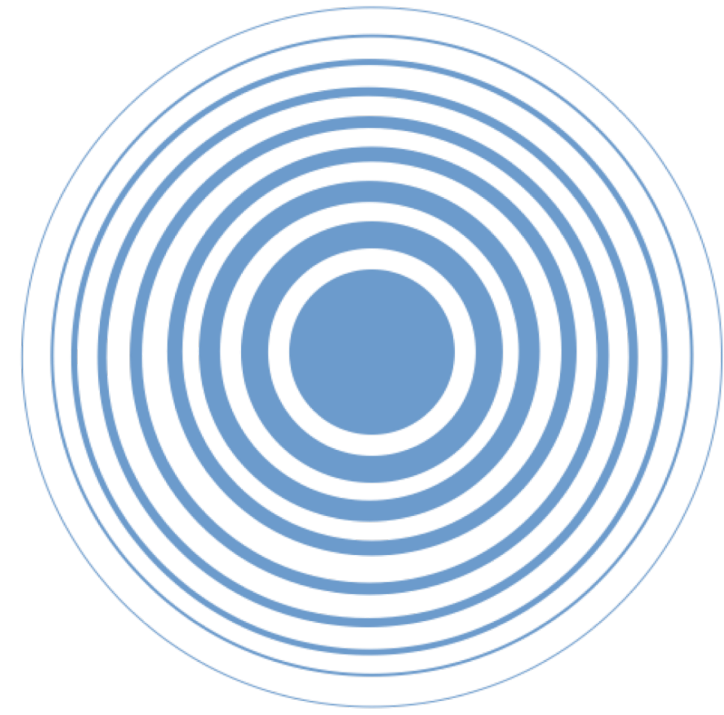


Available infrastructure



Power Consumption

ANT Characteristics



100m



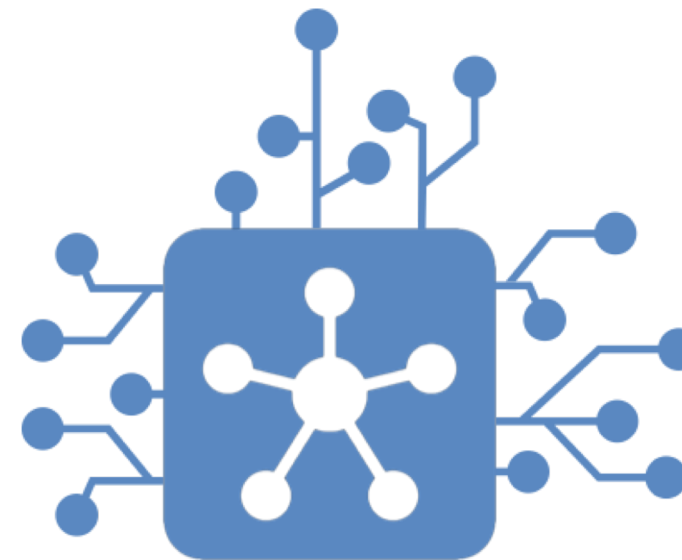
20K-60Kbps



Sub second



Low cost modules

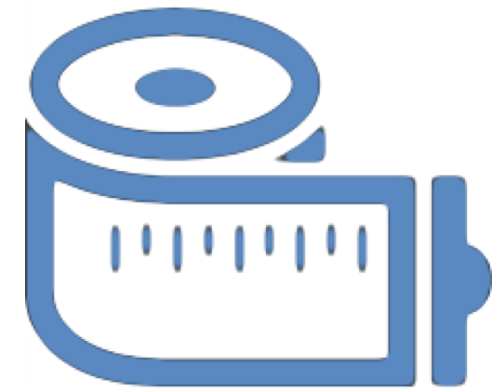


Dedicated gateway/hub



Low power

What makes ANT good for IoT?



Range <100m



**Small amounts of data
i.e sensors**



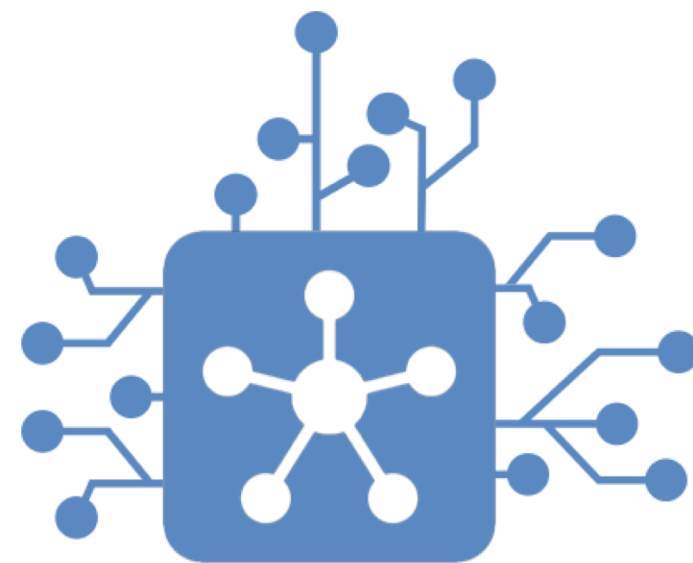
<1 sec latency



**Combined protocol
solutions**



**Cost effective
hardware**



**Available
Gateways**



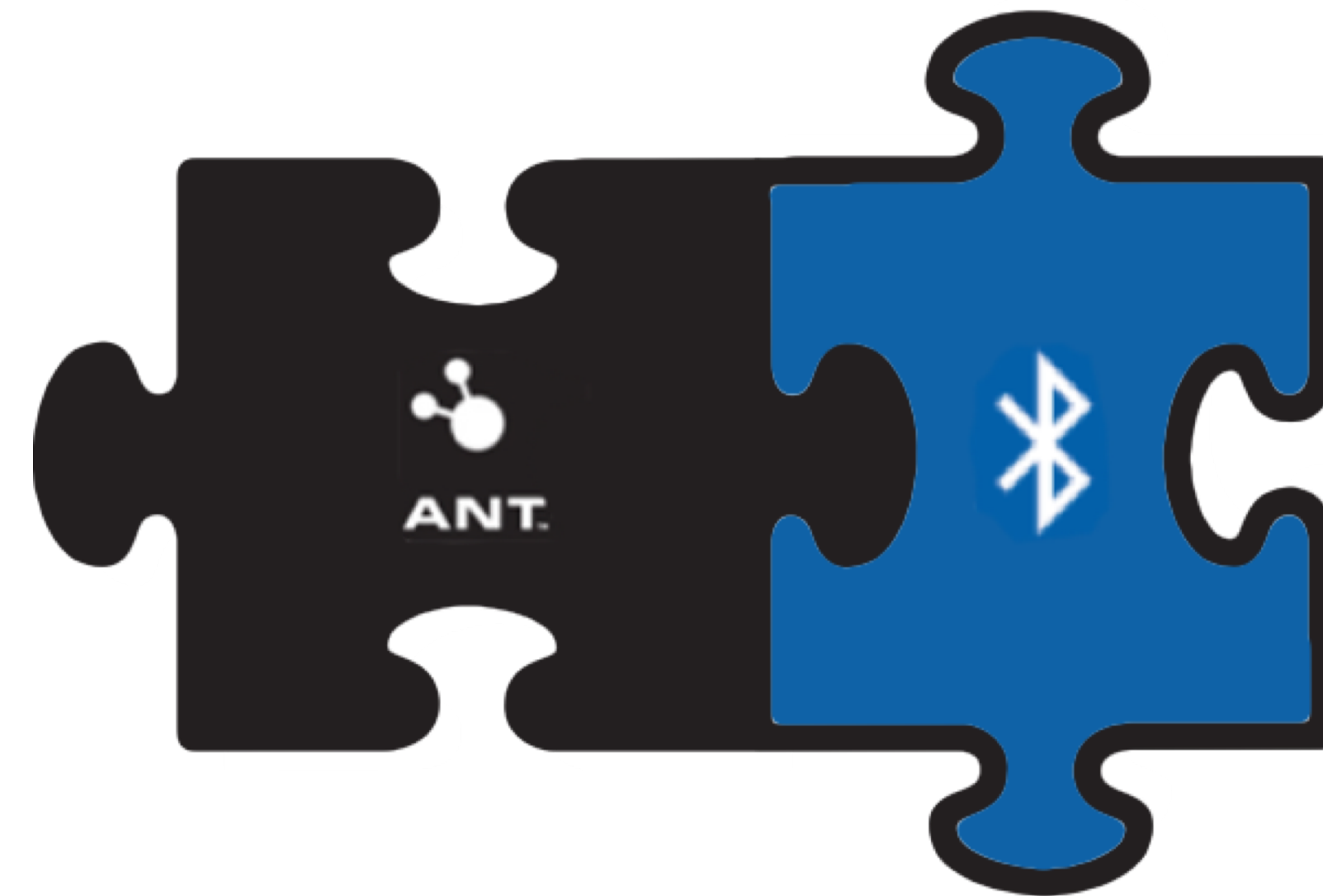
**Low power
operation**



Device Density

Combined protocol device example

- Bluetooth
 - Mobile device connectivity
 - Firmware updates
 - Device commissioning
- ANT
 - Sensor measurement data
 - Event/alarm data



Example Applications

- Sports and Fitness

 - Group fitness

 - Asset management

- Commercial

 - Refrigeration monitoring

 - Process monitoring

 - Asset tracking

- Health care

 - Patient location monitoring



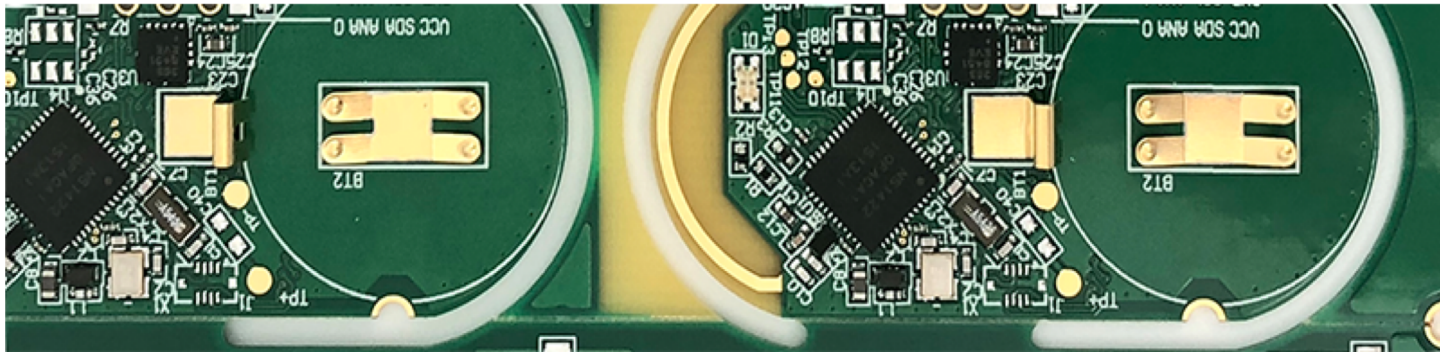
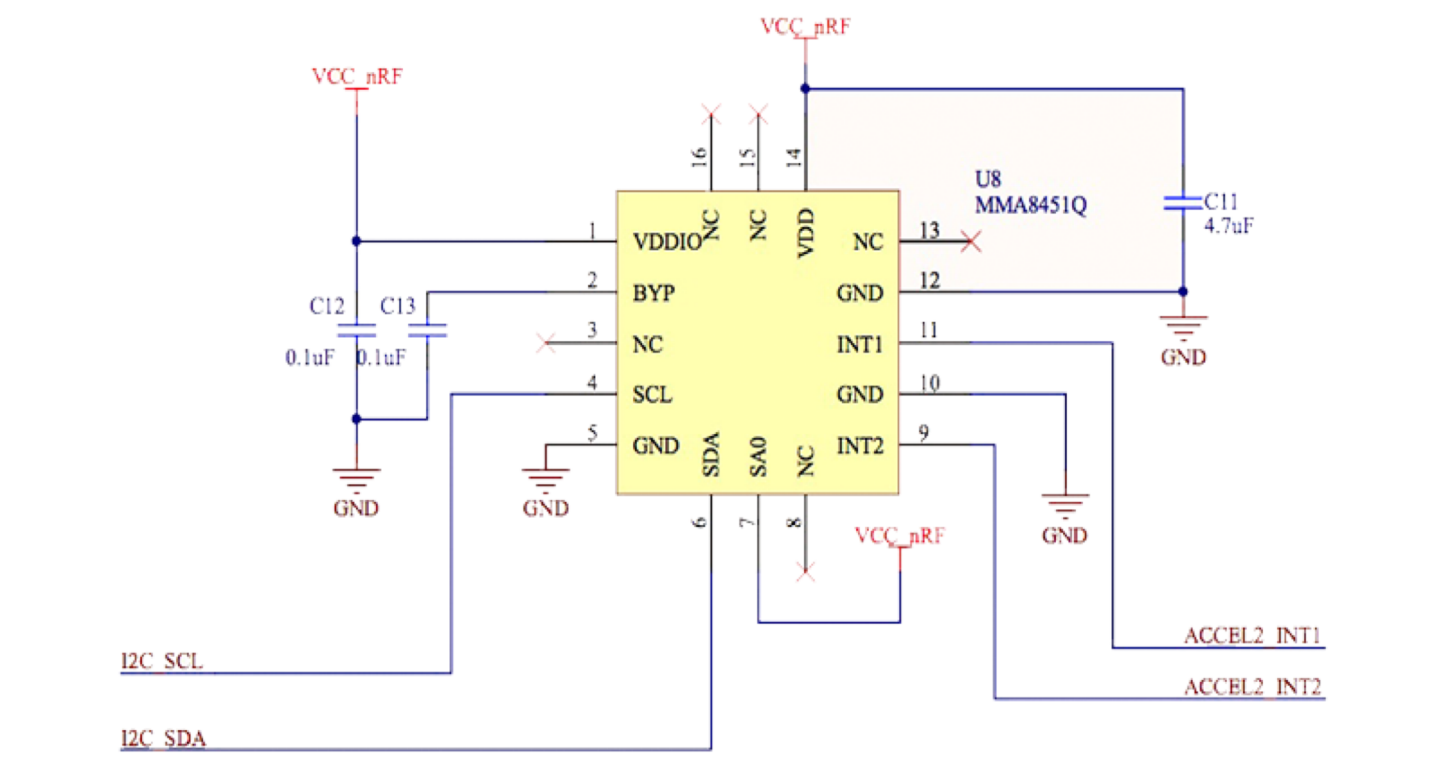
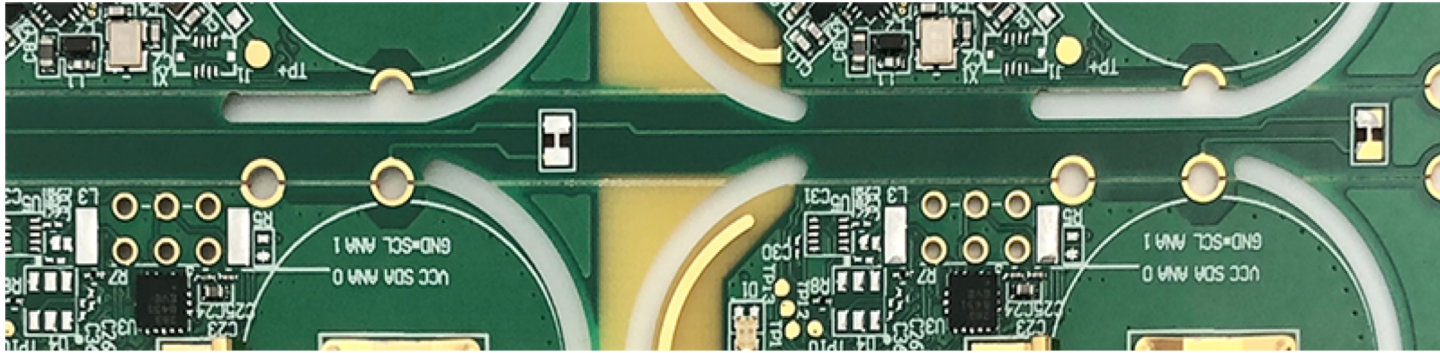
IoT Solutions



OEM Modules



WASP Gateway



Engineering Services



Thank you!

www.npe-inc.com

612-305-0440